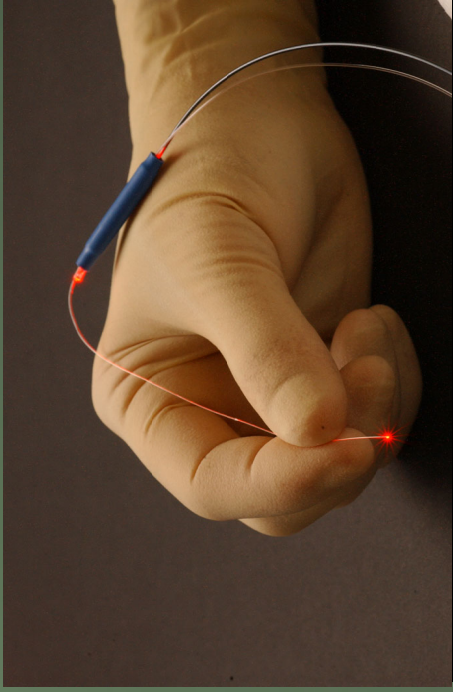


Canaloplasty Glaucoma Surgery



Is it right for you?

Canaloplasty

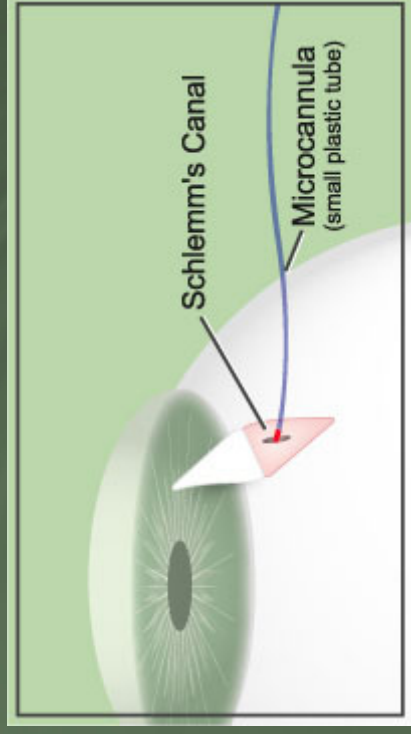


- The surgeon performs the canaloplasty using this small tube (microcannula) with an illuminated tip.
- This new procedure is designed to access and enhance the eye's natural drainage system.



What happens in Canaloplasty

1. A small catheter (plastic tube) is inserted into Schlemm's canal in the eye, through a small surgical flap in the white ("Sclera") of the eye.



2. From a single location, the outflow system can be accessed and treated, thereby restoring the eye's natural circulatory process.

If you agree to participate:



- Standard tests will be performed.
- Follow-up testing will be conducted for 12 months (1 year).
- Your participation in the study is totally voluntary! There are alternative glaucoma treatments that you should discuss with your physician.
- All your medical information will be held private and protected.

Potential Benefits

- The pressure may be lowered.
- The procedure may prevent vision loss or further advancement of the disease.
- The procedure may have an improved safety profile compared to other procedures; less chance of infection.
- There may be no benefit.

